

genopal™

User Manual



Copyright

This software and documentation is Copyright © 2007 of Genometri Pte Ltd. All rights reserved.

License Agreement

Full ownership of this software and all rights pertaining to the distribution of this software, are retained by Genometri Pte Ltd. This software cannot be bundled with any commercial package without expressed written permission from the authors. This license is not a sale of the software or any copy. You may not disassemble, decompose, reverse engineer, or alter the software of any of the files contained in the software package.

THE SOFTWARE IS PROVIDED 'AS-IS' AND WITHOUT WARRANTY OF ANY KIND, EXPRESSED, IMPLIED OR OTHERWISE, INCLUDING WITHOUT LIMITATION, ANY WARRANTY OF MERCHANTABILITY OR FITNESS FOR A PARTICULAR PURPOSE. IN NO EVENT SHALL THE AUTHORS BE LIABLE FOR ANY SPECIAL, INCIDENTAL, INDIRECT OR CONSEQUENTIAL DAMAGES OF ANY KIND, OR ANY DAMAGES WHATSOEVER RESULTING FROM THE LOSS OF USE, DATA OR PROFITS, WHETHER OR NOT ADVISED OF THE POSSIBILITY OF DAMAGE, AND ON ANY THEORY OF LIABILITY, ARISING OUT OF OR IN CONNECTION WITH THE USE OR PERFORMANCE OF THIS SOFTWARE.

License Information

GenoPal is provided under single-user license. A single-user license allows a single individual to use GenoPal on a single computer. If you wish to install and use GenoPal on multiple computers, you may purchase additional licenses.

Download

GenoPal 14-day trial version can be downloaded from www.genopal.com

Activation

To continue using GenoPal after the trial period, you have to purchase it using the "BUY" button on your license screen. You will receive a full version of GenoPal with an activated license upon purchase.



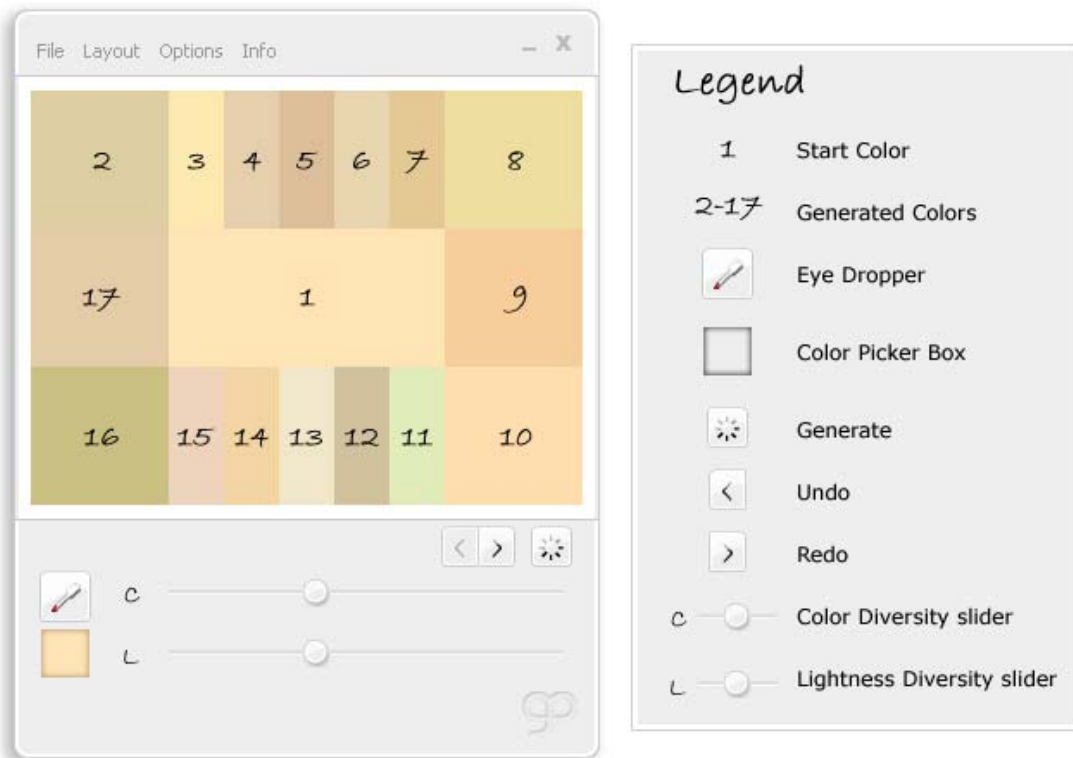
System Requirements

Windows XP Professional/Home 32-bit platform
Windows Vista 32-bit/64-bit platform
Microsoft .NET Framework 2.0
Display supporting at least 16-bit colors
System Memory (RAM): 256Mb
Hard Disk: 20Mb free space

In this Guide

Start Color _____	4
Color Exploration _____	5
Generate Colors _____	6
Undo/Redo _____	6
Color Diversity _____	6
Lightness Diversity _____	6
Eye dropper _____	7
Color Picker Window _____	7
Shortcut Keys _____	8
File Menu _____	8
Layout Menu _____	9
Options Menu _____	9
Color Menu _____	10
Info Menu _____	10
Contacting GenoPal Team _____	11
Feedback _____	11





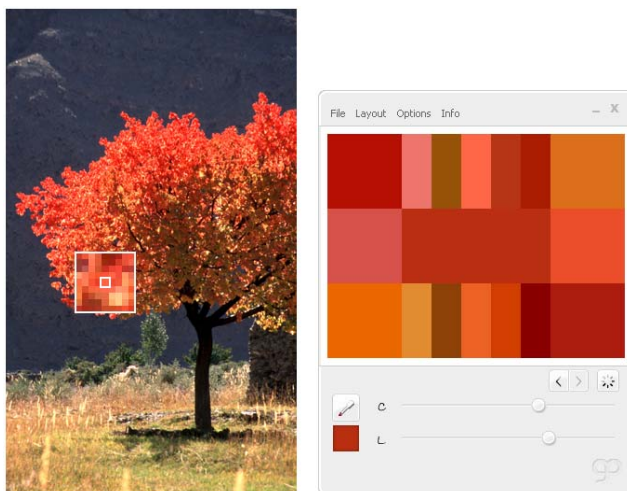


Start Color

GenoPal displays many colors visually related to a start color. All generated colors are different yet related to the start color. The start color is shown in the middle of some layouts as the largest area.

To change the start color, do one of the following:

- Double-click a generated color
- Use the eye dropper  to pick any color on your desktop
- Click color picker box , a window will appear offering many ways to select a start color.



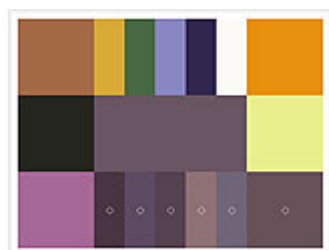
Using GenoPal's eye dropper

Color Exploration

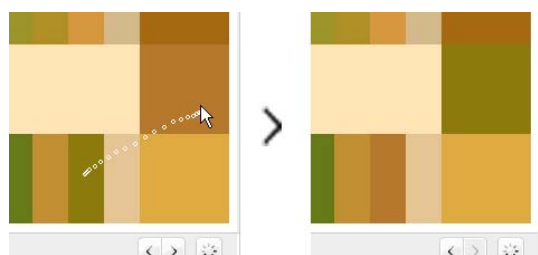
GenoPal can show you thousands of colors associated to a start color at once, depending on the layout you have chosen. The position of the sliders (↔, ⊞) controls the similarities/ dissimilarities of the generated colors.

Each generated color can be

Locked - so that it will not be changed when you regenerate	CTRL+ click or Right-click > Lock
Unlocked - so that it changes when you regenerate	CTRL + click on a previously locked color or Right-click > Unlock
Moved - to swap places with any other color within the layout	drag and drop it over its new position
Translated into color values - color codes to input into other programs	select color, the value will appear at the bottom of the program
Stored as a hex code in the clipboard	select cell, Right-click > Copy (CTRL+C), you may paste in other applications or replace another generated color
Promoted to become the new start color - to generate colors based on a color found within the layout	double-click on the color






Circles indicate locked colors





Drag colors into new positions to swap places

Generate Colors

By pressing the button  a new set of colors will be displayed, they are based on the same  -  settings as the current colors.

Tip: Lock the colors that you like before re-generating.

Undo / Redo

By pressing the arrow  you can undo up to the last 20 sets of generated colors. Click  to redo.

Color Diversity

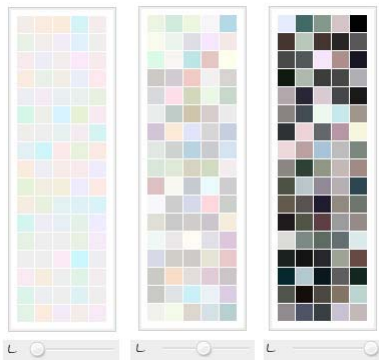
By moving the slider you adjust how similar or different the generated colors will be in terms of their color component.



*Example of generated colors starting with a mid grey:
low, medium and high color difference*


Lightness Diversity

By moving the slider you adjust how much diversity in terms of lightness the generated colors will show.



*Example of generated colors starting with a mid grey:
low, medium and high diversity of lightness*


Eye dropper

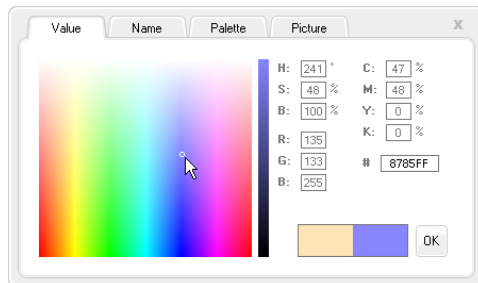
The eye dropper  allows you to select any color on your screen as a new start color.



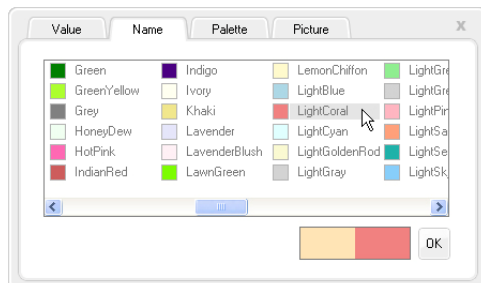
The magnifying glass enlarges the areas on your screen to allow accurate color picking

Color Picker Window

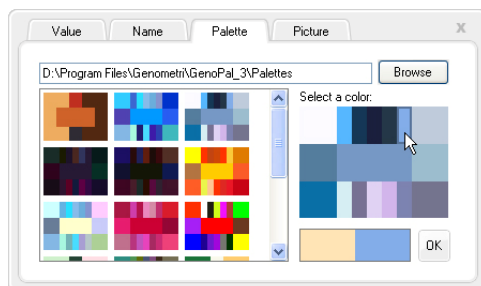
The color picker box  offers you many ways to change a start color. Click on it to open the window.



Input color values RGB, CMYK, HSB, HEX, type in a value or mouse over color patch.



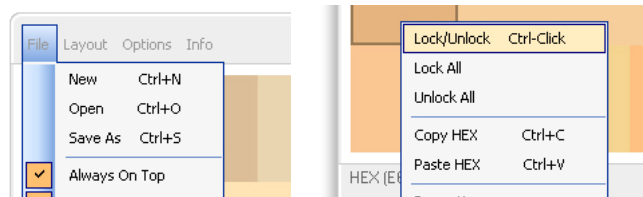
Choose from 147 HTML compatible color names, click on color to select.



Load from saved palette folder, preview and click on desired color cell to select.

Shortcut Keys

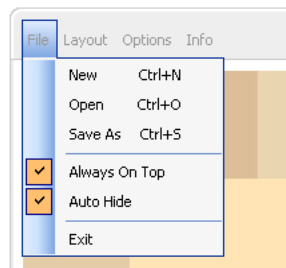
Listed in the dropdown lists are the shortcut keys to your most commonly used functions.



Left: Shortcut keys in top menu dropdown

Right: Shortcut keys found in Right-Click menu on each generated color

File Menu



File – New

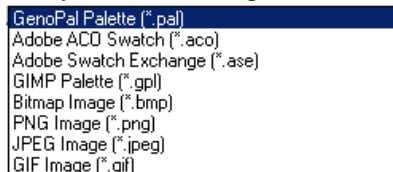
Opens a new GenoPal Palette

File – Open

All previously saved files in GenoPal format can be opened.

File – Save As

Save your palettes in GenoPal (*.pal) format or in any of the following.



File – Always On Top

Toggle the option to float the GenoPal window on top of other programs. Tick to have GenoPal on top.

File – Auto Hide

Toggle the option to auto hide GenoPal controls when inactive. Un-tick to always show controls.



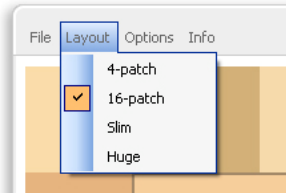
Left: Active mode with controls

Right: Inactive mode without controls

Layout Menu

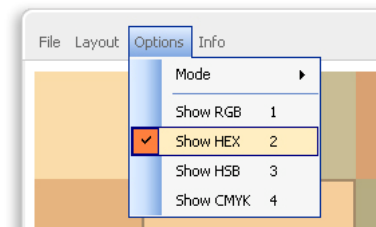
Under Layout in the main menu you find 4 preset layouts: 4- and 16-patch arrangement both suitable for color matching and color scheme making; a slim layout, which allows you to run it easily next to illustration or painting programs; and a huge screen-filling layout.

The default is the 16-patch layout.



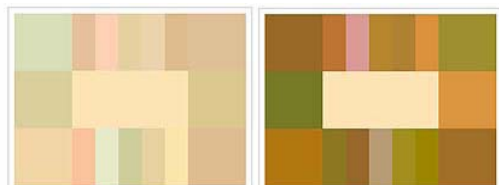
Note: Locked colors will not be kept if you are changing between different sized layouts.

Options Menu



Options – Mode: Standard, Saturated Colors

GenoPal gives you nice colors. These colors are harmonious but often muted. We recognize that designers need stronger colors for highlights. You can now switch mode so that you get the more aggressive colors (to be used sparingly).

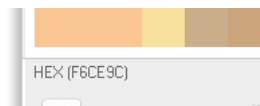


Left: Standard Color Mode
Right: Saturated Colors

Options – Show RGB, HEX, HSB, CMYK

Show the type of color value that you need

Tip: Type 1, 2, 3 or 4 to toggle between the displayed values

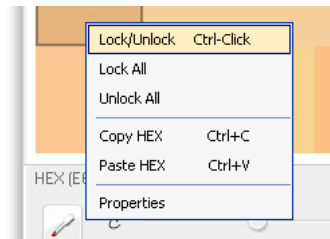


Color Values displayed below palette

Note: When the copy function (CTRL+C) is used, only the HEX code of a selected color is copied into the clipboard and can be pasted directly into source codes.

Color Menu

Right-clicking on a color opens a dropdown list of available functions you can use.



Select a color and right-click

Color – Lock/Unlock, Lock All, Unlock All

Locking will prevent it from being changed at regeneration, a locked color is marked with a circle outline. It will not change even if you change the start color.

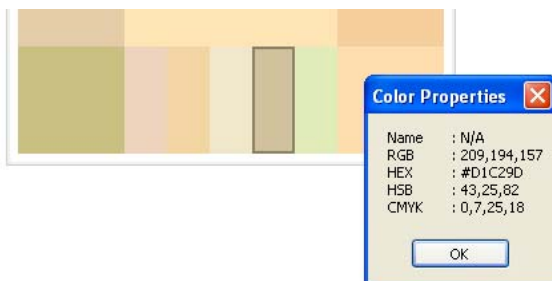
Color – Copy/Paste HEX

You can copy and paste HEX values into your other programs.

Tip: Use shortcut keys CTRL+C, CTRL+V

Color Properties

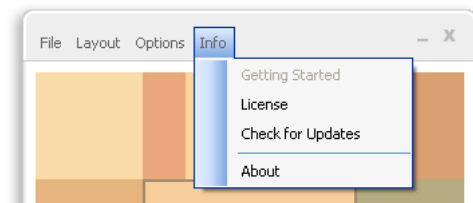
Shows all the color values of the selected color. Useful for transferring color values manually.



Displays all color values of selected color.

Info Menu

“Getting Started” accesses this document to get you started using GenoPal. “License” shows you your license status. “Check Update(s)” is a link to the newest release of GenoPal.



Check for Updates regularly for software upgrades

Contacting GenoPal

Address:

Genometri Pte Ltd
No.14 Prince George's Park Road,
Singapore 118412.

Telephone:

+65 6778 9456

Fax:

+65 6872 4860

Web:

www.genopal.com

Office Hours:

Monday - Friday
9:00AM - 6:00PM (GMT+8, Singapore Time)

Feedback

At GenoPal we strive to develop hi-quality software design solutions and we welcome your feedback both on our product and on our documentation. Please email your comments, suggestions and recommendations to:

info@genopal.com

